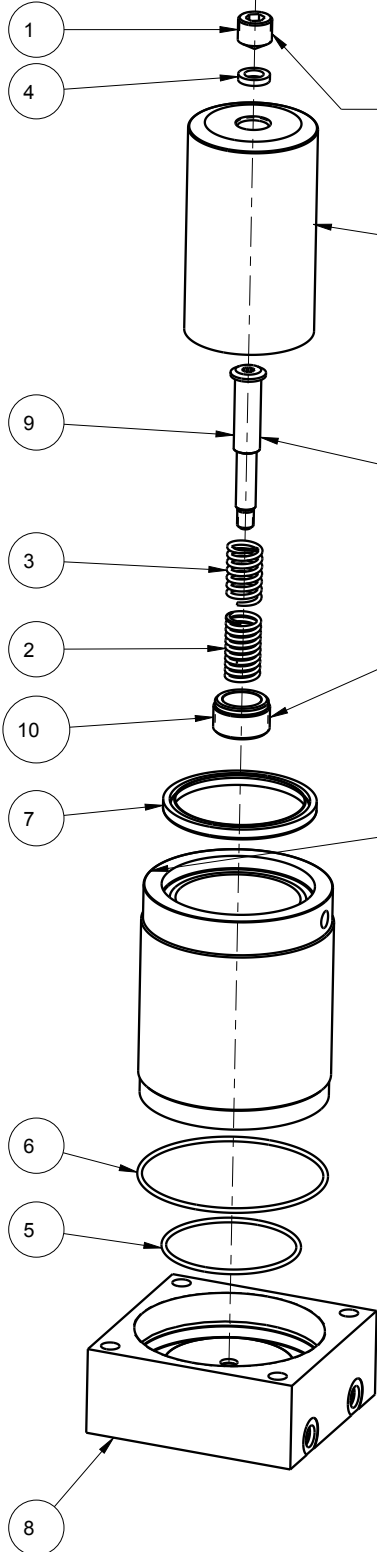


THIS IS A TWO PAGE PARTS LIST  
THIS FIRST PAGE APPLIES TO  
ASSEMBLIES OF REVISION K AND LATER



UNIT MUST BE HYDRAULICALLY "LOCKED"  
TO LOOSEN OR TIGHTEN THIS SET SCREW.  
APPLY MEDIUM STRENGTH THREAD LOCKER (BLUE) TO THREADS.  
TIGHTEN UNTIL SET SCREW CONTACTS THE PLUNGER SEALING GASKET.

PLUNGER  
NON-REPLACEMENT PART

APPLY LUBRICANT TO ALL SEALS PRIOR TO INSTALLATION.  
DO NOT USE SILICONE TYPE LUBRICANTS.

APPLY MEDIUM STRENGTH  
THREAD LOCKER (BLUE) TO THREADS.  
TIGHTEN TO 12 FT-LBS TORQUE.

APPLY HIGH STRENGTH  
THREAD LOCKER (RED) TO THREADS.  
TIGHTEN TO 30 FT-LBS TORQUE.

BODY/SLEEVE ASSY  
NON-REPLACEMENT PART  
TIGHTEN TO 600 FT-LBS TORQUE

NO	QTY	PART NO	DESCRIPTION	STD SEAL KIT	SPRING KIT
1	1	21440013	SHSS, CONE POINT		
2	1	23314003	SPRING, COMPRESSION		X
3	1	23314004	SPRING, COMPRESSION		X
4	1	39000052	GASKET, (-205)	X	X
5	1	39001025	O-RING, (-150)	X	
6	1	39001027	O-RING, (-155)	X	
7	1	39011072	WIPER,PRESS-IN, (2-7/8)	X	
8	1	81042900	BASE, WS, SPR & AA, 20000		
9	1	81042902	STUD, SPRING, WS, AA, 20000		
10	1	81042903	RETAINER, SPR, WS, AA&SPR, 20000		
N/A	N/A	60100529	KIT, SEAL	NOTED	N/A
N/A	N/A	61100030	KIT, SPRING	N/A	NOTED

PARTS LIST



VEKTEK, INC.  
1334 E. SIXTH AVE. P.O. BOX 625  
EMPORIA, KS. 66801 U.S.A.

G	3240	RELEASE	JDW	04/22/17
REV	IN ACCORDANCE WITH ECN	EFFECTIVE DATE	REVISED BY	DATE
DRW BY:	JACOB	DRAWING STATUS: Released		
DATE:	8-16-90	PRODUCTION APPROVED FOR RELEASED STATUS ONLY		

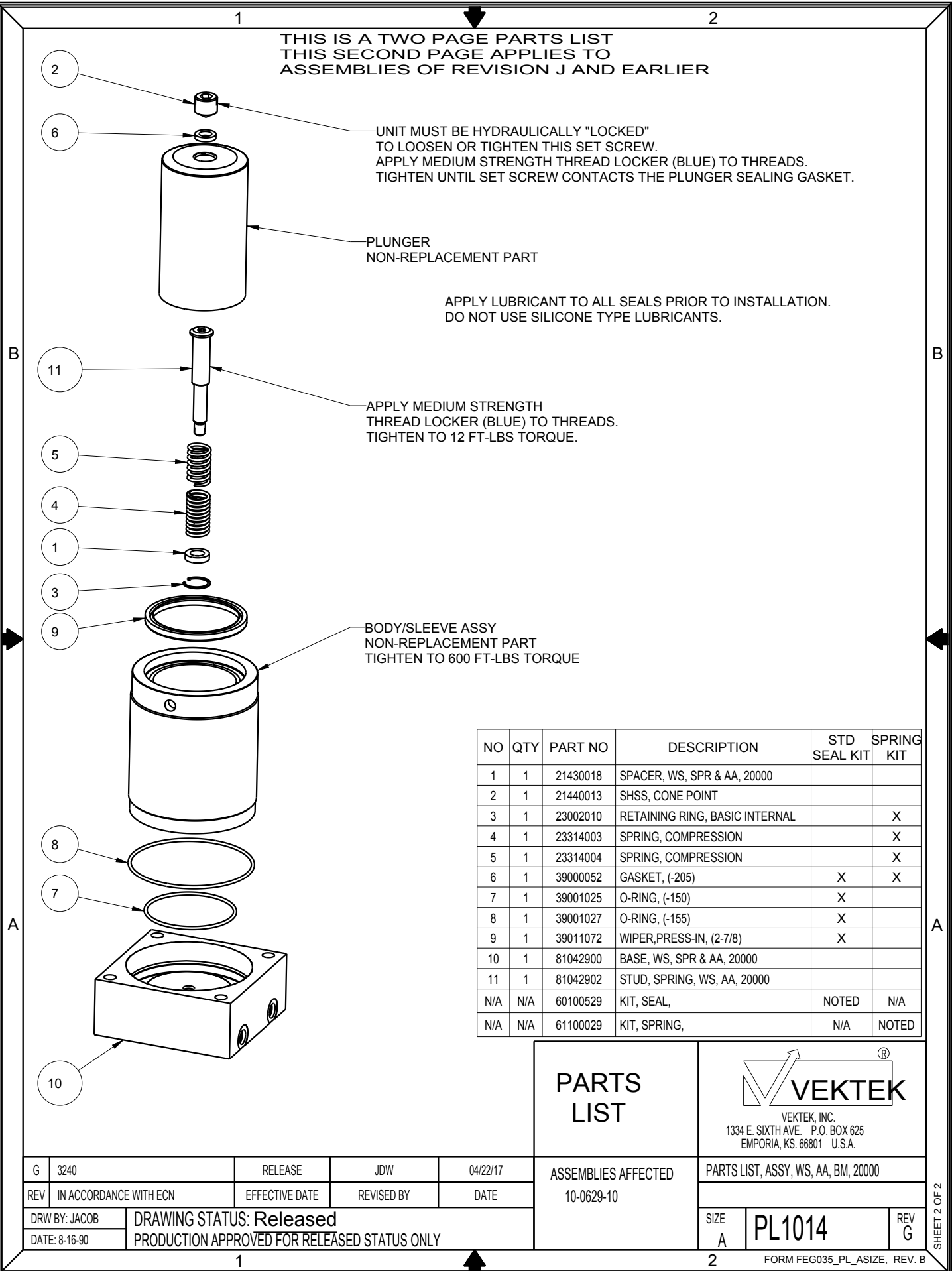
ASSEMBLIES AFFECTED  
10-0629-10

PARTS LIST, ASSY, WS, AA, BM, 20000

SIZE  
A PL1014

REV  
G

THIS IS A TWO PAGE PARTS LIST  
THIS SECOND PAGE APPLIES TO  
ASSEMBLIES OF REVISION J AND EARLIER



UNIT MUST BE HYDRAULICALLY "LOCKED"  
TO LOOSEN OR TIGHTEN THIS SET SCREW.  
APPLY MEDIUM STRENGTH THREAD LOCKER (BLUE) TO THREADS.  
TIGHTEN UNTIL SET SCREW CONTACTS THE PLUNGER SEALING GASKET.

PLUNGER  
NON-REPLACEMENT PART

APPLY LUBRICANT TO ALL SEALS PRIOR TO INSTALLATION.  
DO NOT USE SILICONE TYPE LUBRICANTS.

APPLY MEDIUM STRENGTH  
THREAD LOCKER (BLUE) TO THREADS.  
TIGHTEN TO 12 FT-LBS TORQUE.

BODY/SLEEVE ASSY  
NON-REPLACEMENT PART  
TIGHTEN TO 600 FT-LBS TORQUE

NO	QTY	PART NO	DESCRIPTION	STD SEAL KIT	SPRING KIT
1	1	21430018	SPACER, WS, SPR & AA, 20000		
2	1	21440013	SHSS, CONE POINT		
3	1	23002010	RETAINING RING, BASIC INTERNAL		X
4	1	23314003	SPRING, COMPRESSION		X
5	1	23314004	SPRING, COMPRESSION		X
6	1	39000052	GASKET, (-205)	X	X
7	1	39001025	O-RING, (-150)	X	
8	1	39001027	O-RING, (-155)	X	
9	1	39011072	WIPER,PRESS-IN, (2-7/8)	X	
10	1	81042900	BASE, WS, SPR & AA, 20000		
11	1	81042902	STUD, SPRING, WS, AA, 20000		
N/A	N/A	60100529	KIT, SEAL,	NOTED	N/A
N/A	N/A	61100029	KIT, SPRING,	N/A	NOTED

PARTS LIST



VEKTEK, INC.  
1334 E. SIXTH AVE. P.O. BOX 625  
EMPORIA, KS. 66801 U.S.A.

ASSEMBLIES AFFECTED  
10-0629-10

PARTS LIST, ASSY, WS, AA, BM, 20000

G	3240	RELEASE	JDW	04/22/17
REV	IN ACCORDANCE WITH ECN	EFFECTIVE DATE	REVISED BY	DATE
DRW BY:	JACOB	DRAWING STATUS: Released		
DATE:	8-16-90	PRODUCTION APPROVED FOR RELEASED STATUS ONLY		

SIZE A PL1014 REV G